

FOR RESEARCH USE ONLY

NOT FOR IN VITRO CLINICAL DIAGNOSIS

## VD3(Vitamin D3) ELISA Kit

Catalog NO.:FY-EU1114 size: 96T/48T

This manual must be read attentively and completely before using this product.  
If you have any problems, please contact us.

Phone: 86-027-87002654  
Email: [info@feiyuebio.com](mailto:info@feiyuebio.com)  
Website: [www.feiyuebio.com](http://www.feiyuebio.com)

## Intended Use

The kit is intended for use in quantitative determination of VD3 concentrations in serum, plasma, tissue homogenates, cell lysates, cell culture supernates and other biological fluids.

## Specification

- ★ Sensitivity:2.14 ng/mL.
- ★ Detection Range:6.25-400 ng/mL.
- ★ No significant cross-reactivity or interference between VD3 and analogues was observed.
- ★ Repeatability: Coefficient of variation is 8%.

## Principle of the Procedure

This ELISA kit uses the Competitive-ELISA principle. The micro ELISA plate provided in this kit has been pre-coated with VD3. During the reaction, VD3 in the sample or standard competes with a fixed amount of VD3 on the solid phase supporter for sites on the Biotinylated Detection Ab specific to VD3. Excess conjugate and unbound sample or standard are washed away, and Avidin-Horseradish Peroxidase (HRP) conjugate are added to each micro plate well and incubated. Then a TMB substrate solution is added to each well. The enzyme-substrate reaction is terminated by the addition of stop solution and the color turns from blue to yellow. The optical density (OD) is measured spectrophotometrically at a wavelength of 450 nm. The concentration of VD3 in tested samples can be calculated by comparing the OD of the samples to the standard curve.

## Limitations of the Procedure

1. This kit is for laboratory scientific research only, we will not be responsible for any consequences if this kit is used for clinical diagnosis or any other procedures.
2. Due to the uncertainty of its validity, this kit may not be suitable for testing some special experimental samples, such as gene knockout experiments.
3. This kit should be used before its expiration date, and please strictly follow the instructions for storage.
4. Different manufacturers' kits or testing the same analyte by other methods may produce inconsistent results because we do not compare our products with those of other manufacturers.
5. Since the antibodies used in the kit are usually prepared from recombinant proteins as immunogen, and recombinant proteins can be limited by different fragmentation, expression and purification systems, it is not recommended to use this kit to detect recombinant proteins
6. In order to get the best experimental results, please use only the reagents

- provided by the manufacturer, and do not mix reagents from different batches.
7. Due to the existing conditions and the limitations of science and technology, we cannot fully identify and analyze the raw materials provided by the supplier comprehensively. Therefore, the kit may have some quality and technical risks.
  8. The possibility of interference cannot be excluded before all factors are tested in the ELISA immunoassay.
  9. In order to obtain reproducible results, each step in the experiment should be controlled and variations in sample collection, handling and storage may also lead to differences in sample measurements.
  10. Although each kit passes rigorous quality testing, differences in measured values between batches of kits can still be caused by factors such as shipping conditions and different laboratory equipment.

## Reagents&Materials Provided

Item	Specifications	Storage
Micro ELISA Plate (Dismountable)	96T: 8 wells ×12 strips 48T: 8 wells ×6 strips	-20°C, 6 months
Reference Standard	96T: 2 vials 48T: 1 vial	
Concentrated Biotinylated Detection Ab (100×)	96T: 1 vial, 60μL 48T: 1 vial, 60μL	
Concentrated HRP Conjugate (100×)	96T: 1 vial, 120μL 48T: 1 vial, 60μL	-20°C, 6 months
Reference Standard & Sample Diluent	1 vial, 20 mL	2-8°C, 6 months
Biotinylated Detection Ab Diluent	1 vial, 13 mL	
HRP Conjugate Diluent	1 vial, 13mL	
Concentrated Wash Buffer (25×)	1 vial, 30 mL	
Substrate Reagent	1 vial, 10 mL	2-8°C (Protect from light)

Stop Solution	1 vial, 10 mL	2-8°C, 6 months
Plate Sealer	5 pieces	RT
Product Description	1 copy	
Certificate of Analysis	1 copy	

## Materials & Equipment Required But Not Provided

Microplate reader with 450nm wavelength filter

Incubator capable of maintaining 37°C

Single or multi-channel pipettes with high precision

disposable pipette tips

EP tubes

Container for Wash Solution

Squirt bottle, manifold dispenser, or automated microplate washer

Deionized or distilled water

Absorbent paper for blotting the microplate

## Sample collection

**Serum:** Allow blood samples to clot for 2 hours at room temperature or overnight at 2-8°C before centrifugation for 15 min at 2000×g at 2-8°C. Supernatants should be taken for assay testing immediately or stored at -20°C or -80°C for later use.

**Plasma:** Collect plasma using EDTA or heparin as an anticoagulant. Centrifuge samples for 15 min at 2000×g at 2-8°C within 30 min of collection. Supernatants should be taken for assay testing immediately or stored at -20°C or -80°C for later use.

**Tissue homogenates:** Tissues should be rinsed in ice-cold PBS to remove excess blood thoroughly, weighed, minced into small pieces. then Tissue pieces

omogenized in PBS (tissue weight (g): PBS (mL) volume=1:9) with a glass homogenizer on ice. The resulting suspension is sonicated with an ultrasonic cell disrupter till the solution is clarified. The homogenates are then centrifuged for 5 min at 10000×g. Supernatants should be taken for assay testing immediately or stored at -20°C or -80°C for later use.

**Cell lysates:** For adherent cells, gently wash the cells with moderate amount of cool PBS and detach the cells with trypsin. Collect cells by centrifugation for 5 min at 1500×g(suspension cells can be collected by centrifugation directly). Discard the supernate and wash cells 3 times with cool PBS. Resuspend cells in cool PBS with concentration of  $5 \times 10^6$  cells/mL. Repeat the freeze-thaw process several times until the cells are fully lysed. Centrifuge for 15min at 2000×g at 2-8°C. Supernatants should be taken for assay testing immediately or stored at -20°C or -80°C for later use.

**Cell culture supernatant and other biological fluids:** Centrifuge samples for 15 min at 1500× g at 2-8°C. Supernatants should be taken for assay testing immediately or stored at -20°C or -80°C for later use.

### Note for sample

1. Samples should be used within 6 days when stored at 2-8°C, otherwise samples must be stored at -20°C ( $\leq 1$ month) or -80°C ( $\leq 2$ months). Avoid repeated freeze-thaw cycles.
2. Please predict the concentration before assaying. If the sample concentration is not within the range of the standard curve, users must determine the optimal sample dilutions for their particular experiments.
3. If the samples are not indicated in the manual, a preliminary experiment to determine the validity of the kit is necessary.
4. If a lysis buffer is used to prepare tissue homogenates or cell culture supernatant, there is a possibility to cause a deviation due to the introduced chemical substance.
5. Some recombinant protein may not be detected due to a mismatching with the coated antibody or detection antibody.
6. Please do not use hemolyzed samples for ELISA as it will affect the test results.
7. Fresh samples without long time storage is recommended for the test. Otherwise, protein degradation and denaturalization may occur in those samples and finally lead to wrong result.

## Reagent Preparation

1. Allow all reagents to return to room temperature (18-25°C) before use.
2. **Wash Buffer:** Dilute 20 mL of Concentrated Wash Buffer with 480 mL of deionized or distilled water to prepare 500 mL of Wash Buffer.
3. **Standard working solution:** First, centrifuge the standard at 1000×g for 1 min, add 1mL of standard sample dilution, let it stand for 10min and then mix gently, that is 400ng/mL of standard working solution.  
Second, take 7 EP tubes, add 500μL of Standard & Sample Diluent to each tube. Pipette 500μL of the 400ng/mL working solution to the first tube and mix up to produce a 200ng/mL working solution. Pipette 500μL of the solution from the former tube into the latter one according to the picture shown below. Mix each tube thoroughly before the next transfer. Set up 7 points of diluted standard such as  
400ng/mL, 200ng/mL, 100ng/mL, 50ng/mL, 25ng/mL, 12.5ng/mL, 6.25ng/mL and the last EP tubes with Standard & Sample Diluent is the blank as 0ng/mL



400	200	100	50	25	12.5	6.25	0
ng/mL	ng/mL	ng/mL	ng/mL	ng/mL	ng/mL	ng/mL	ng/mL

- 4. Biotinylated Detection Ab working solution:** Calculate the required amount before the experiment (100  $\mu$ L/well). In preparation, slightly more than calculated should be prepared. Centrifuge the stock tube before use, dilute the 100 $\times$  Concentrated Detection Reagent A to 1 $\times$  working solution with Assay Diluent A.
- 5. HRP Conjugate working solution:** Calculate the required amount before the experiment (100  $\mu$ L/well). In preparation, slightly more than calculated should be prepared. Centrifuge the stock tube before use, dilute the 100 $\times$  Concentrated Detection Reagent B to 1 $\times$  working solution with Assay Diluent B.



## Assay Protocol

1. Add the **Standard working solution** to the first two columns: Each concentration of the solution is added in duplicate, to one well each, side by side (50 $\mu$ L for each well). Add the samples to the other wells (50  $\mu$ L for each well).
2. Add 50 $\mu$ L of **Detection Reagent A working solution** to each well. Cover with the plate sealer. Incubate for 60 min at 37°C.
3. Discard the liquid from each well, add 350 $\mu$ L of **wash buffer** to each well. Soak for 30sec and decant the solution from each well and pat it dry against clean absorbent paper. Repeat this wash step 3 times in total.
4. Add 100 $\mu$ L of **Detection Reagent B working solution** to each well. Cover with the plate sealer. Incubate for 30 min at 37°C.
5. Turn on the enzyme marker for preheating.
6. Discard the liquid from each well, repeat the washing process of step 3 for 5 times.
7. Add 90 $\mu$ L of **TMB Reagent** to each well. Cover with a new plate sealer. Incubate for 10-20 min at 37°C. Protect the plate from light.
8. Add 50  $\mu$ L of **Stop Solution** to each well.
9. The absorbance OD value of each well is measured at 450nm.

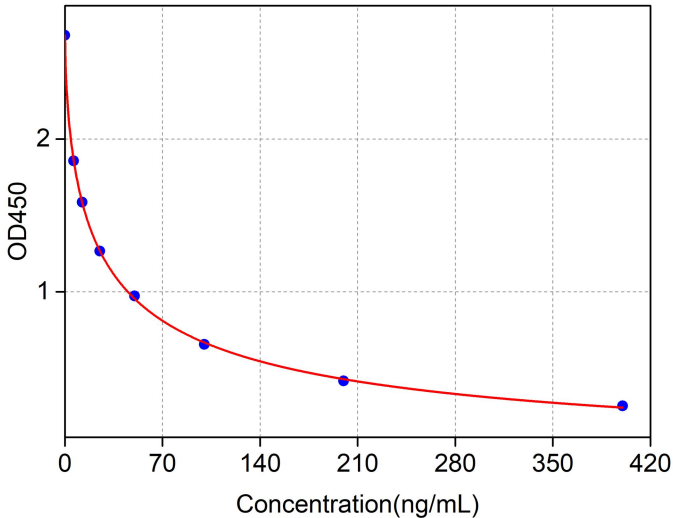
### Example Data

The OD values of the standard curve may vary according to the conditions of the actual assay performance (e.g. operator, pipetting technique, washing technique or temperature effects), so plotting log of the data to establish a standard curve for each test is strongly recommended. Typical standard curve is provided below for reference only.

Concentration (ng/mL)	OD450nm		Mean OD
	OD <sub>1</sub>	OD <sub>2</sub>	
400	0.258	0.258	0.258
200	0.421	0.421	0.421
100	0.661	0.664	0.663
50	0.978	0.988	0.983
25	1.271	1.275	1.273
12.5	1.591	1.592	1.592
6.25	1.861	1.863	1.862
0	2.683	2.704	2.694

### Calculation of Results

Average the duplicate readings for each standard and samples. Plot a four parameter logistic curve on log-log axis, with standard concentration on the x-axis and OD values on the y-axis. If the OD of the sample under the lowest limit of the standard curve, you should re-test it with an appropriate dilution. The actual concentration is the calculated concentration multiplied by the dilution factor.



### Sensitivity

The minimum detectable dose of VD3 is typically less than 2.14 ng/mL.

The sensitivity of this assay, or Limit of Detection (LOD) was defined as the lowest protein concentration that could be differentiated from zero. It was determined by adding three standard deviations to the mean OD value of twenty zero standard replicates and calculating the corresponding concentration.

### Specificity

This assay has high sensitivity and excellent specificity for detection of VD3. No significant cross-reactivity or interference between VD3 and analogues was observed. Limited by current skills and knowledge, it is impossible for us to complete the cross-reactivity detection between VD3 and all the analogues, therefore, cross reaction may still exist.

## Precision

Mean coefficient of variation for Intra-Assay and Inter-Assay: 3 samples with low, middle and high level concentration were tested for repeat multiple times, respectively.

Item	Intra-Assay	Inter-Assay
Sample number	3	3
Replicate	9	18
CV(%)	5	8

## Recovery

Three matrices listed below were spiked with certain level of VD3, The recovery rates of VD3 were calculated by comparing the measured value to the expected amount of VD3 in samples.

Matrix type	Recovery Range (%)	Average (%)
Serum (n=5)	92-105	98
EDTA plasma (n=5)	84-96	90
Cell culture media (n=5)	80-95	87

## Linearity

Three types of Sample were spiked with appropriate concentrations of VD3 and diluted into a series of concentration gradients, then the linearity of the assay was demonstrated by the percentage of comparing calculated concentrations and expected values.

Dilution Factor	Recovery Range (%)		
	Serum (n=5)	EDTA plasma (n=5)	Cell culture media (n=5)
1:2	86-93	93-102	91-104
1:4	91-105	93-102	89-97
1:8	87-98	93-106	93-102
1:16	89-94	87-101	81-96

## Summary for Procedure



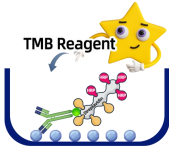
1、Add 50 $\mu$ L standard or sample to the wells, immediately add 50 $\mu$ L Biotinylated Detection Ab working solution to each well. Incubate for 30 min at 37°C



2、Aspirate and wash the plate for 3 times.



3、Add 100 $\mu$ L HRP conjugate working solution. Incubate for 30 min at 37°C. Aspirate and wash the plate for 3 times



4、Add 100 $\mu$ L Substrate Reagent. Incubate for 15 min at 37°C



5、Add 50 $\mu$ L Stop Solution



6、Read the plate at 450nm immediately. Calculation of the results

## Troubleshooting

Problem	Possible Causes	Subsequent Actions
Poor standard curve	Improper standard dilution	Ensure that standards are dissolved and diluted in the recommended manner
	Inaccurate pipetting	Periodically calibrate pipettes and check the pipette tips
	Evaporate the reaction solution	Seal the enzyme plate with plate sealer
	Incomplete plate washing	Adequate washing times and the amount of washing solution added
	Foreign matter in the bottom of wells	Clean the bottom of the plate before reading
Weak or no color development	Insufficient reaction of reagents	Ensure incubation time and incubate at the recommended temperature
	Inadequate reagent volumes	Check the pipette and Follow the steps strictly to operate
	Improper dilution	Check the reagent dilution process
	Inactivation of enzyme conjugate	Mix conjugate and substrate, check by color development
Low OD value	Incorrect setting of microplate reader	Check the wavelength of reader
	No stop solution added	Add appropriate amount of stop solution
	Waiting too long time to read	Read the plate in time
High background	Contaminated chromogenic solution	Replace chromogenic solution
	Coloring time is too long	Control the coloring time
	Wrong dilution of reaction reagent	Use the recommended dilution
	Inadequate washing of the plate	Adequate washing times and the amount of washing solution added