

FOR RESEARCH USE ONLY

NOT FOR IN VITRO CLINICAL DIAGNOSIS

## EasyPro Human Heat Shock Protein 60(HSP-60/HSPD1)ELISA Kit

Catalog NO.:FY-EH2083S size: 96T/48T

This manual must be read attentively and completely before using this product.  
If you have any problems, please contact us.

Email: [info@feiyuebio.com](mailto:info@feiyuebio.com)

Website: [www.feiyuebio.com](http://www.feiyuebio.com)

### Intended Use

The kit is intended for use in quantitative determination of Human HSP-60/HSPD1 concentrations in serum, plasma, tissue homogenates, cell lysates, cell culture supernates and other biological fluids.

### Specification

- ★ Sensitivity:0.94 ng/mL.
- ★ Detection Range:1.57-100ng/mL.
- ★ No significant cross-reactivity or interference between Human HSP-60/HSPD1 and analogues was observed.
- ★ Repeatability: Coefficient of variation is 8%.

## Principle of the Procedure

This ELISA kit uses the Sandwich-ELISA principle. The micro ELISA plate provided in this kit has been pre-coated with an antibody specific to Human HSP-60/HSPD1. Samples (or Standards) and and Horseradish Peroxidase (HRP) linked antibody specific for Human HSP-60/HSPD1 are added to the micro ELISA plate wells. Human HSP-60/HSPD1 in samples (or standards) combines with the coated antibody and HRP linked detection antibody special to Human HSP-60/HSPD1. Excess conjugate and unbound sample or standard are washed from the plate. The enzyme-substrate reaction is terminated by the addition of stop solution and the color turns yellow. The optical density (OD) is measured spectrophotometrically at a wavelength of 450 nm. The OD value is proportional to the concentration of Human HSP-60/HSPD1. You can calculate the concentration of Human HSP-60/HSPD1 in the samples by comparing the OD of the samples to the standard curve.

## Limitations of the Procedure

- 1.This kit is for laboratory scientific research only, we will not be responsible for any consequences if this kit is used for clinical diagnosis or any other procedures.
- 2.Due to the uncertainty of its validity, this kit may not be suitable for testing some special experimental samples, such as gene knockout experiments.
- 3.This kit should be used before its expiration date, and please strictly follow the instructions for storage.
- 4.Different manufacturers' kits or testing the same analyte by other methods may produce inconsistent results because we do not compare our products with those of other manufacturers.
- 5.Since the antibodies used in the kit are usually prepared from recombinant proteins as immunogen, and recombinant proteins can be limited by different fragmentation, expression and purification systems, it is not recommended to use this kit to detect recombinant proteins

6. In order to get the best experimental results, please use only the reagents provided by the manufacturer, and do not mix reagents from different batches.
7. Due to the existing conditions and the limitations of science and technology, we cannot fully identify and analyze the raw materials provided by the supplier comprehensively. Therefore, the kit may have some quality and technical risks.
8. The possibility of interference cannot be excluded before all factors are tested in the ELISA immunoassay.
9. In order to obtain reproducible results, each step in the experiment should be controlled and variations in sample collection, handling and storage may also lead to differences in sample measurements.
10. Although each kit passes rigorous quality testing, differences in measured values between batches of kits can still be caused by factors such as shipping conditions and different laboratory equipment.

## Reagents&Materials Provided

Item	Specifications	Storage
Micro ELISA Plate (Dismountable)	96T: 8 wells ×12 strips 48T: 8 wells ×6 strips 24T: 8 wells ×3 strips	-20°C, 6 months
Reference Standard	96T: 2 vials 48T: 1 vial 24T: 1 vial	
Concentrated HRP Conjugate (100×)	96T: 1 vial, 60μL 48T: 1 vial, 30μL 24T: 1 vial, 30μL	-20°C, 6 months
Reference Standard & Sample Diluent	1 vial, 20 mL	2-8°C, 6 months
HRP Conjugate Diluent	1 vial, 13mL	
Concentrated Wash Buffer (25×)	1 vial, 30 mL	
Substrate Reagent	1 vial, 10 mL	2-8°C (Protect from light)
Stop Solution	1 vial, 10 mL	2-8°C, 6 months

Plate Sealer	5 pieces	RT
Product Description	1 copy	
Certificate of Analysis	1 copy	

## Materials & Equipment Required But Not Provided

Microplate reader with 450nm wavelength filter

Incubator capable of maintaining 37°C

Single or multi-channel pipettes with high precision  
 disposable pipette tips

EP tubes

Container for Wash Solution

Squirt bottle, manifold dispenser, or automated microplate washer

Deionized or distilled water

Absorbent paper for blotting the microplate

## Sample collection

**Serum:** Allow blood samples to clot for 2 hours at room temperature or overnight at 2-8°C before centrifugation for 15 min at 2000×g at 2-8°C. Supernatants should be taken for assay testing immediately or stored at -20°C or -80°C for later use.

**Plasma:** Collect plasma using EDTA or heparin as an anticoagulant. Centrifuge samples for 15 min at 2000×g at 2-8°C within 30 min of collection. Supernatants should be taken for assay testing immediately or stored at -20°C or -80°C for later use.

**Tissue homogenates:** Tissues should be rinsed in ice-cold PBS to remove excess blood thoroughly, weighed, minced into small pieces. then Tissue pieces omogenized in PBS (tissue weight (g): PBS (mL) volume=1:9) with a glass homogenizer on ice. The resulting suspension is sonicated with an ultrasonic cell disrupter till the solution is clarified. The homogenates are then centrifuged for 5

min at 10000×g. Supernatants should be taken for assay testing immediately or stored at -20°C or -80°C for later use.

**Cell lysates:** For adherent cells, gently wash the cells with moderate amount of cool PBS and detach the cells with trypsin. Collect cells by centrifugation for 5 min at 1500×g(suspension cells can be collected by centrifugation directly). Discard the supernate and wash cells 3 times with cool PBS. Resuspend cells in cool PBS with concentration of  $5 \times 10^6$  cells/mL. Repeat the freeze-thaw process several times until the cells are fully lysed. Centrifuge for 15min at 2000×g at 2-8°C. Supernatants should be taken for assay testing immediately or stored at -20°C or -80°C for later use.

**Cell culture supernatant and other biological fluids:** Centrifuge samples for 15 min at 1500× g at 2-8°C. Supernatants should be taken for assay testing immediately or stored at -20°C or -80°C for later use.

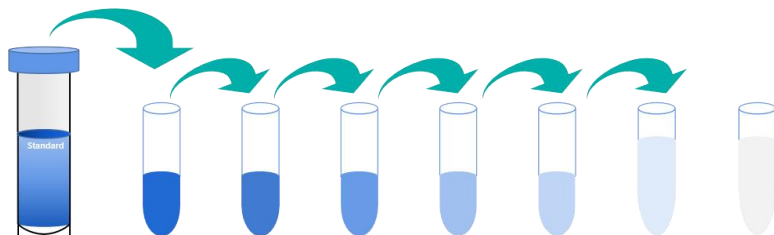
## Note for sample

1. Samples should be used within 6 days when stored at 2-8°C, otherwise samples must be stored at -20°C ( $\leq 1$ month) or -80°C ( $\leq 2$ months). Avoid repeated freeze-thaw cycles.
2. Please predict the concentration before assaying. If the sample concentration is not within the range of the standard curve, users must determine the optimal sample dilutions for their particular experiments.
3. If the samples are not indicated in the manual, a preliminary experiment to determine the validity of the kit is necessary.
4. If a lysis buffer is used to prepare tissue homogenates or cell culture supernatant, there is a possibility to cause a deviation due to the introduced chemical substance.
5. Some recombinant protein may not be detected due to a mismatching with the coated antibody or detection antibody.
6. Please do not use hemolyzed samples for ELISA as it will affect the test results.
7. Fresh samples without long time storage is recommended for the test. Otherwise, protein degradation and denaturalization may occur in those samples and finally lead to wrong result.

## Reagent Preparation

1. Allow all reagents to return to room temperature (18-25°C) before use.
2. **Wash Buffer:** Dilute 20 mL of Concentrated Wash Buffer with 480 mL of deionized or distilled water to prepare 500 mL of Wash Buffer.
3. **Standard working solution:** First, centrifuge the standard at 1000×g for 1 min, add 1mL of standard sample dilution, let it stand for 10min and then mix gently, that is 100ng/mL of standard working solution. Second, take 7 EP tubes, add 500μL of Standard & Sample Diluent to each tube. Pipette 500μL of the 100ng/mL working solution to the first tube and mix up to produce a 50ng/mL working solution. Pipette 500μL of the solution from the former tube into the latter one according to the picture shown below. Mix each tube thoroughly before the next transfer. Set up 7 points of diluted standard such as 100ng/mL, 50ng/mL, 25ng/mL, 12.5ng/mL, 6.25ng/mL, 3.13ng/mL, 1.57ng/mL and the last EP tubes with Standard & Sample Diluent is the blank as 0ng/mL





100	50	25	12.5	6.25	3.13	1.57	0
ng/mL	ng/mL	ng/mL	ng/mL	ng/mL	ng/mL	ng/mL	ng/mL

**4. HRP Conjugate working solution:** Calculate the required amount before the experiment (50 $\mu$ L/well). In preparation, slightly more than calculated should be prepared. Centrifuge the Concentrated HRP Conjugate at 800 $\times$ g for 1 min, then dilute the 100 $\times$  Concentrated HRP Conjugate to 1 $\times$  working solution with HRP Conjugate Diluent (Concentrated HRP Conjugate: HRP Conjugate Diluent= 1: 99).

## Assay Protocol

1. The Micro ELISA Plate slats to be used were removed from the plate frame and the remaining slats were returned to the aluminum foil bag containing the desiccants and then resealed for storage.
2. Determine wells for diluted standard, blank and sample. Add 50 $\mu$ L each dilution of standard, blank and sample into the appropriate wells (It is recommended that all samples and standards be assayed in duplicate). Immediately add 50 $\mu$ L of HRP Conjugate working solution to each well. Cover the plate with a new sealer. Incubate for 60 min at 37°C. Note: solutions should be added to the bottom of the micro ELISA plate well, avoid touching the inside wall and causing foaming as much as possible.
3. Decant the solution from each well add 300 $\mu$ L of wash buffer to each well. Soak for 0.5 min and aspirate or decant the solution from each well and pat it dry against clean absorbent paper. Repeat this wash step 3 times. Note: a microplate washer can be used in this step and other wash steps. Make the tested strips in use immediately after the wash step. Do not allow wells to be dry.
4. Add 100 $\mu$ L of Substrate Reagent to each well. Cover the plate with a new sealer. Incubate for about 15 min at 37°C. Protect the plate from light. Note: the reaction time can be shortened or extended according to the actual color change, but not more than 30 min. Preheat the Microplate Reader for about 15 min before OD measurement.
5. Add 50 $\mu$ L of Stop Solution to each well. Note: adding the stop solution should be done in the same order as the substrate solution.
6. Determine the optical density (OD value) of each well at once with a micro plate reader set to 450 nm.

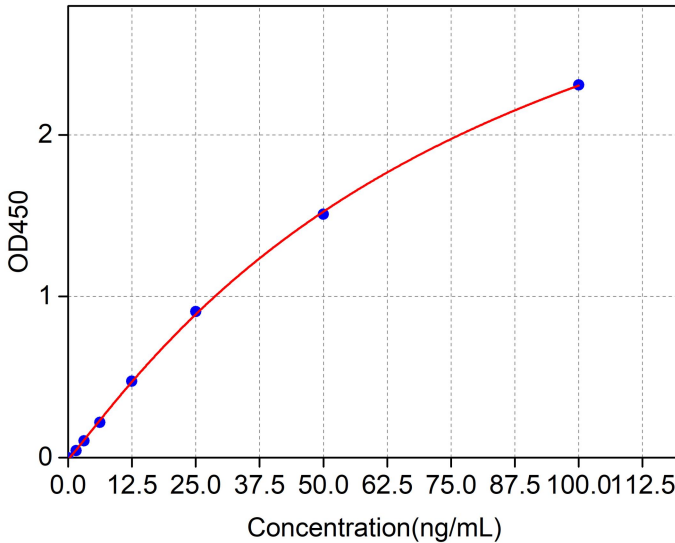
## Example Data

The OD values of the standard curve may vary according to the conditions of the actual assay performance (e.g. operator, pipetting technique, washing technique or temperature effects), so plotting log of the data to establish a standard curve for each test is strongly recommended. Typical standard curve is provided below for reference only.

Concentration (ng/mL)	OD450nm		Mean OD	Corrected OD
	1	2		
100	2.335	2.379	2.357	2.333
50	1.533	1.537	1.535	1.511
25	0.93	0.947	0.939	0.915
12.5	0.498	0.503	0.501	0.477
6.25	0.243	0.244	0.244	0.22
3.13	0.128	0.13	0.129	0.105
1.57	0.067	0.067	0.067	0.043
0	0.024	0.024	0.024	0

### Calculation of Results

Average the duplicate readings for each standard and samples, then subtract the average zero standard optical density. Create a standard curve with standard concentration on the x-axis and OD values on the y-axis. Draw a best fit curve through the points and it can be determined by regression analysis. If samples have been diluted, the concentration read from the standard curve must be multiplied by the dilution factor



### Sensitivity

The minimum detectable dose of Human HSP-60/HSPD1 is typically less than 0.94 ng/mL.

The sensitivity of this assay, or Limit of Detection (LOD) was defined as the lowest protein concentration that could be differentiated from zero. It was determined by adding three standard deviations to the mean OD value of twenty zero standard replicates and calculating the corresponding concentration.

### Specificity

This assay has high sensitivity and excellent specificity for detection of Human HSP-60/HSPD1. No significant cross-reactivity or interference between Human HSP-60/HSPD1 and analogues was observed. Limited by current skills and knowledge, it is impossible for us to complete the cross-reactivity detection between Human HSP-60/HSPD1 and all the analogues, therefore, cross reaction

may still exist.

### Precision

Mean coefficient of variation for Intra-Assay and Inter-Assay: 3 samples with low, middle and high level concentration were tested for repeat multiple times, respectively.

Item	Intra-Assay	Inter-Assay
Sample number	3	3
Replicate	9	18
CV(%)	5	8

### Recovery

Three matrices listed below were spiked with certain level of Human HSP-60/HSPD1, The recovery rates of Human HSP-60/HSPD1 were calculated by comparing the measured value to the expected amount of Human HSP-60/HSPD1 in samples.

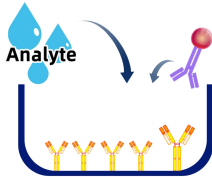
Matrix type	Recovery Range (%)	Average (%)
Serum (n=5)	80-95	86
EDTA plasma (n=5)	80-96	88
Cell culture media (n=5)	80-92	86

### Linearity

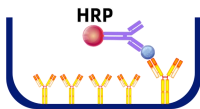
Three types of Sample were spiked with appropriate concentrations of Human HSP-60/HSPD1 and diluted into a series of concentration gradients, then the linearity of the assay was demonstrated by the percentage of comparing calculated concentrations and expected values.

Dilution Factor	Recovery Range (%)		
	Serum (n=5)	EDTA plasma (n=5)	Cell culture media (n=5)
1:2	89-99	85-105	86-93
1:4	83-103	84-98	91-105
1:8	98-105	95-102	87-98
1:16	96-101	88-102	99-105

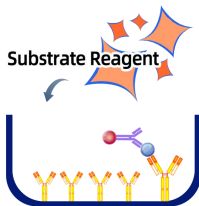
## Summary for Procedure



Add 50 $\mu$ L standard or sample to the wells, immediately add 50 $\mu$ L HRP conjugate working solution to each well. Incubate for 60 min at 37 $^{\circ}$ C



Aspirate and wash the plate for 3 times.



Add 100 $\mu$ L Substrate Reagent. Incubate for 15-20 min at 37 $^{\circ}$ C



Add 50 $\mu$ L Stop Solution



Read the plate at 450nm immediately. Calculation of the results

## Troubleshooting

Problem	Possible Causes	Subsequent Actions
Poor standard curve	Improper standard dilution	Ensure that standards are dissolved and diluted in the recommended manner
	Inaccurate pipetting	Periodically calibrate pipettes and check the pipette tips
	Evaporate the reaction solution	Seal the enzyme plate with plate sealer
	Incomplete plate washing	Adequate washing times and the amount of washing solution added
	Foreign matter in the bottom of wells	Clean the bottom of the plate before reading
Weak or no color development	Insufficient reaction of reagents	Ensure incubation time and incubate at the recommended temperature
	Inadequate reagent volumes	Check the pipette and Follow the steps strictly to operate
	Improper dilution	Check the reagent dilution process
	Inactivation of enzyme conjugate	Mix conjugate and substrate, check by color development
Low OD value	Incorrect setting of microplate reader	Check the wavelength of reader
	No stop solution added	Add appropriate amount of stop solution
	Waiting too long time to read	Read the plate in time
High background	Contaminated chromogenic solution	Replace chromogenic solution
	Coloring time is too long	Control the coloring time
	Wrong dilution of reaction reagent	Use the recommended dilution
	Inadequate washing of the plate	Adequate washing times and the amount of washing solution added